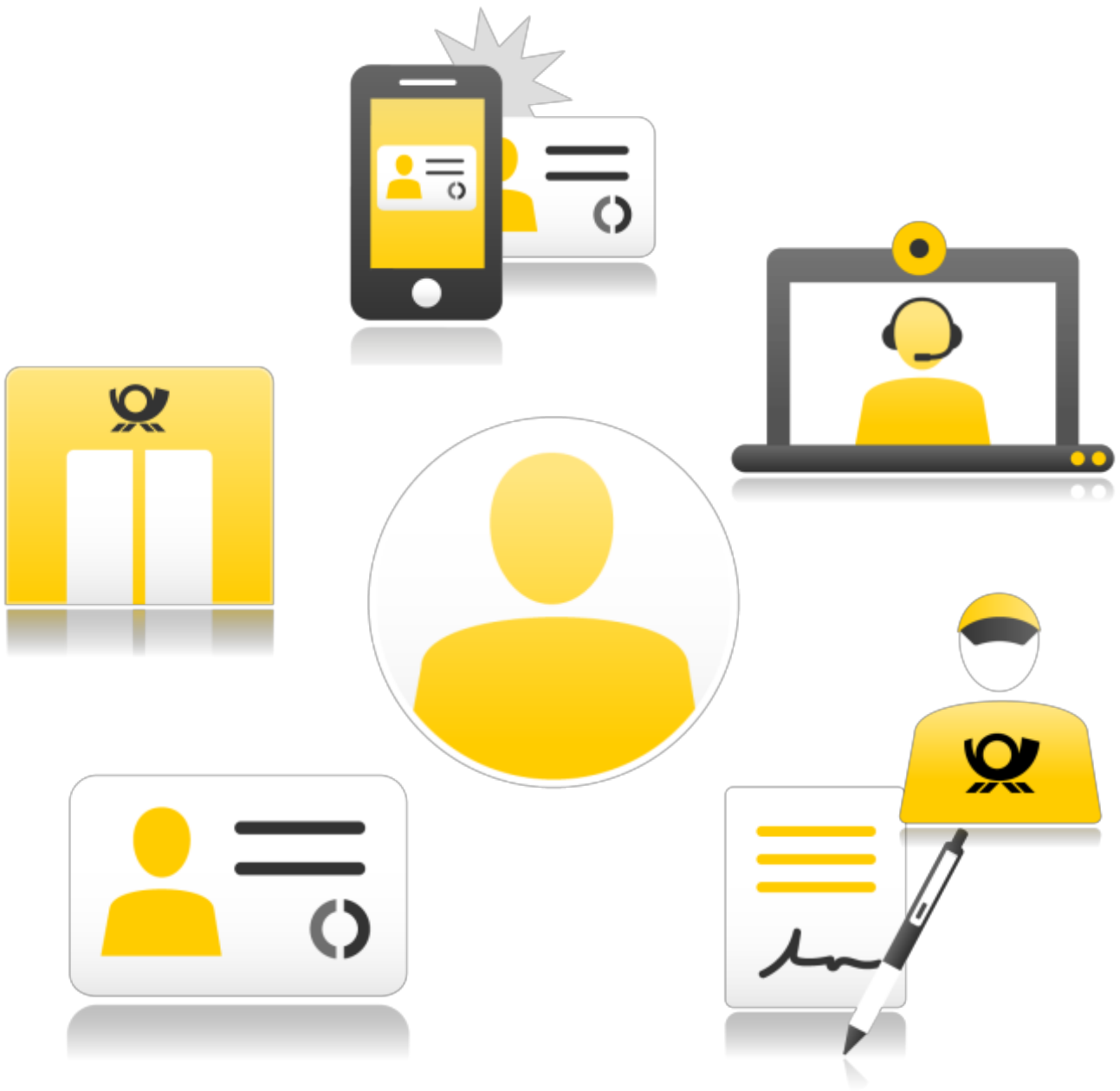




## App2App Deep Link Guide





# App2App Deep Link Guide

Overview .....	2
Direct Linking .....	2
Linking via Web-Browser .....	2
iOS feature (clipboard) .....	3
Android feature (Install Referrer) .....	3



## Changelog

Date	Change
23.03.2017	Same link via Web Browser for iOS and Android.

## Overview

Deeplinks are Hyperlinks between program components. These components may be whole Apps or even certain parts of an App. In the context of the POSTIDENT App deeplinks allow to access directly the POSTIDENT App with a prefilled Case-ID.

In order to support a deeplink functionality the POSTIDENT app has registered the scheme `postident://`. There are different ways to open the POSTIDENT app automatically from the outside using a deeplink.

## Direct Linking

A **direct link** can be used to address and open an app directly (e.g. App to App communication). The following direct links are platform independent.

It should be noted that the target app must be installed to be able to receive this link.

Description	Link
Open the app without Case-ID:	<code>postident://</code>
Open the app with a prefilled Case-ID:	<code>postident://cases/{caseId}</code>

### Note

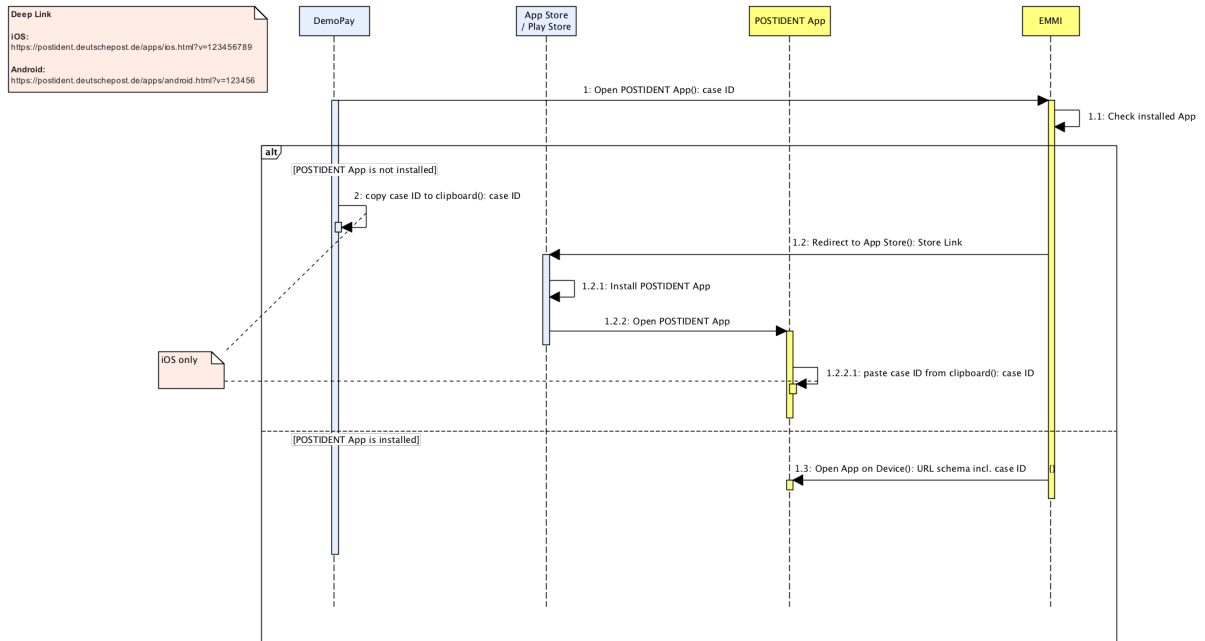
The Case-ID is limited to alphanumeric values. Case-IDs with invalid characters will be ignored (e.g.: `postident://cases/SSKDJdfsdfs.?DFSDFS`)

## Linking via Web-Browser

Using a Web-Browser redirect, it is possible to send a Deep link, which also checks whether an app is already installed or not. For this, one of the links listed below has to be used:

Description	Link
Open the app without Case-ID	<code>https://postident.deutschepost.de/apps</code>
Open the app with Case-ID	<code>https://postident.deutschepost.de/apps/?v=123456789</code>

The link opens the Web-Browser of the device, a script checks if the app is installed and redirects the user either in the store or directly in the app (via direct link).



## iOS feature (clipboard)

In iOS the Case-ID should be written to the clipboard earlier (before installation), so that the app can be used with a prefilled Case-ID after first opening.

## Android feature (Install Referrer)

Using the Android Link including a Case-ID, the Case-ID is prefilled in the POSTIDENT app after installation (install Referrer). The link to the playstore must be enhanced with a query-parameter: `referrer=case:1234567`.

Opening the app after installation an android specific broadcast mechanism informs the app about the additional parameter und the case-ID will be prefilled.